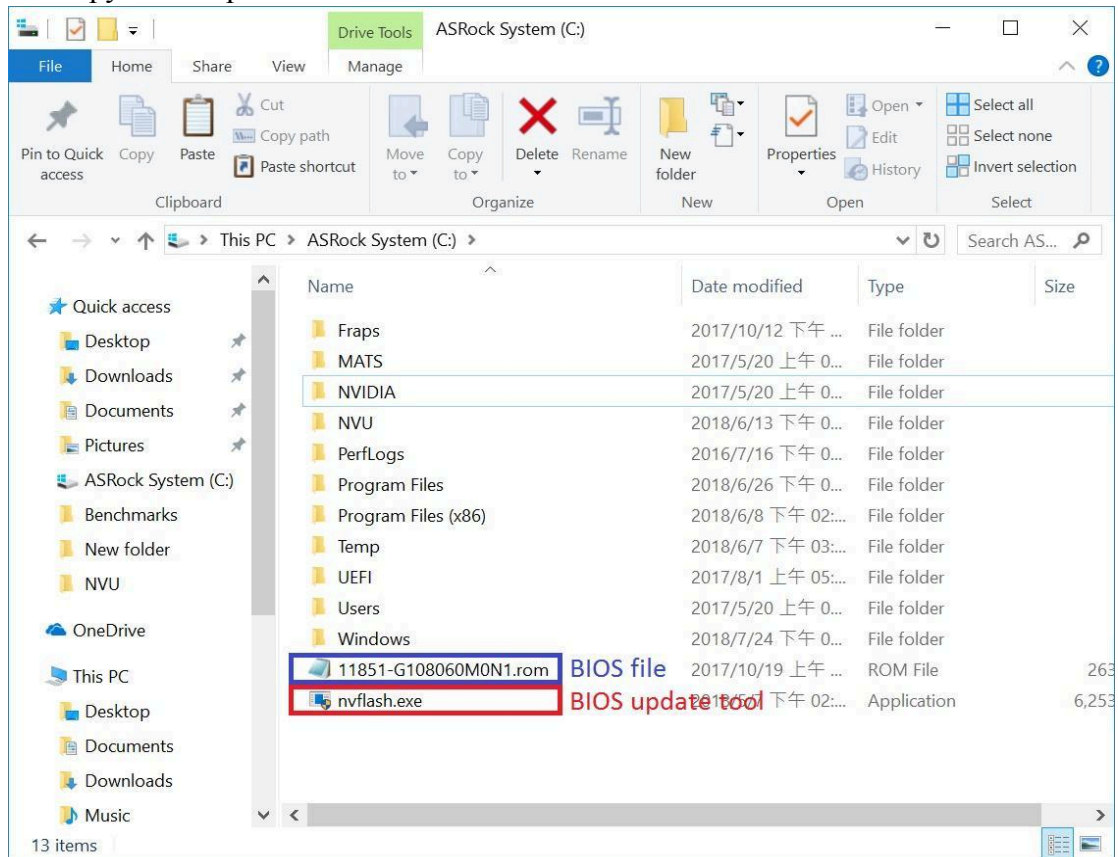
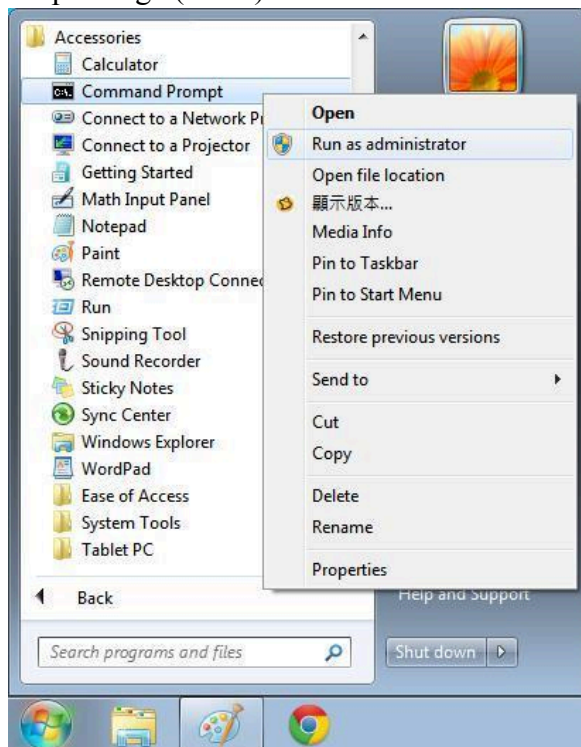


# How to update the graphic card BIOS

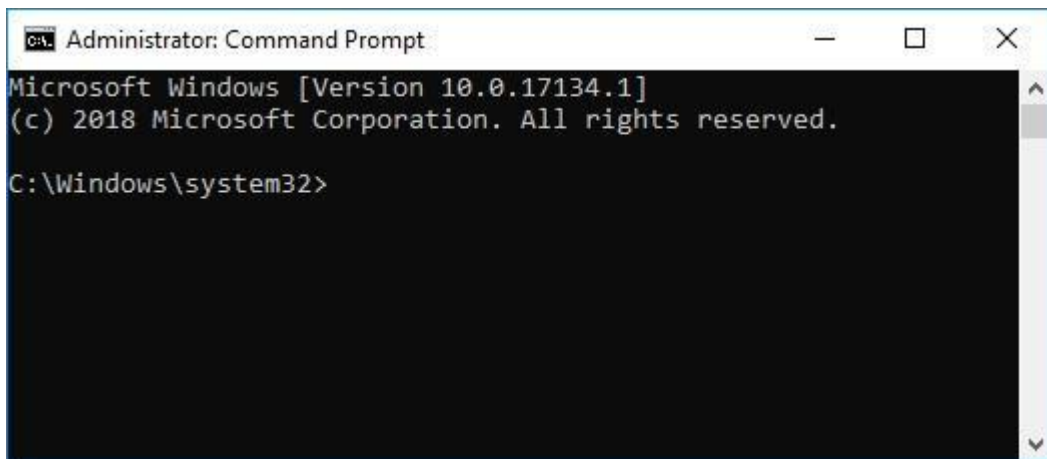
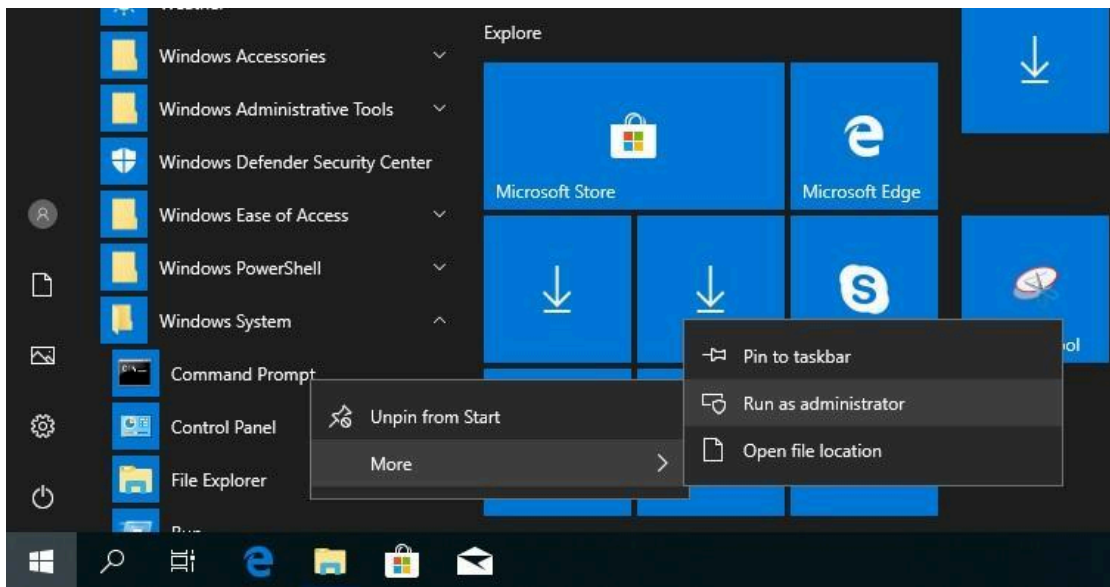
1. Copy BIOS update tool and BIOS file into C:\



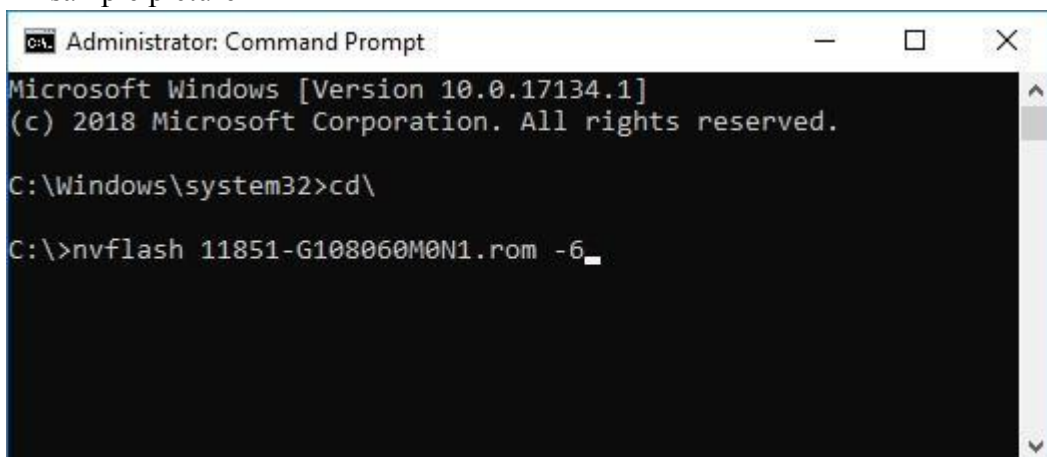
2. Launch Start/All Programs/Accessories/Command Prompt with administrator privilege (Win7)



- Launch Start/Windows System/Command Prompt with administrator privilege (Win10)



3. Move to C:\ then input command “**nvflash <BIOS file name> -6**” as below sample picture



4. Input command “**y**” to confirm

```
NVIDIA Firmware Update Utility
Microsoft Windows [Version 10.0.17134.1]
(c) 2018 Microsoft Corporation. All rights reserved.

C:\Windows\system32>cd\

C:\>nvflash 11851-G108060M0N1.rom -6
NVIDIA Firmware Update Utility (Version 5.449.0)
Copyright (C) 1993-2018, NVIDIA Corporation. All rights reserved.

Checking for matches between display adapter(s) and image(s)...

Adapter: GeForce GTX 1080      (10DE,1B80,10DE,1B80) H:--:NRM  S:00,B:01,D:00,F:00

Current      - Version:86.04.60.00.C2 ID:10DE:1B80:10DE:1B80
               BIOS-P/N@N11853 (Normal Board)
Replace with - Version:86.04.60.00.C6 ID:10DE:1B80:10DE:1B80
               BIOS-P/N@N11851 (Normal Board)

Update display adapter firmware?
Press 'y' to confirm (any other key to abort):
```

## 5. BIOS update complete

```
Administrator: Command Prompt
Microsoft Windows [Version 10.0.17134.1]
(c) 2018 Microsoft Corporation. All rights reserved.

C:\Windows\system32>cd\

C:\>nvflash 11851-G108060M0N1.rom -6
NVIDIA Firmware Update Utility (Version 5.449.0)
Copyright (C) 1993-2018, NVIDIA Corporation. All rights reserved.

Checking for matches between display adapter(s) and image(s)...

Adapter: GeForce GTX 1080      (10DE,1B80,10DE,1B80) H:--:NRM  S:00,B:01,D:00,F:00

Current      - Version:86.04.60.00.C2 ID:10DE:1B80:10DE:1B80
               BIOS-P/N@N11853 (Normal Board)
Replace with - Version:86.04.60.00.C6 ID:10DE:1B80:10DE:1B80
               BIOS-P/N@N11851 (Normal Board)

Update display adapter firmware?
Press 'y' to confirm (any other key to abort):
EEPROM ID (EF,6013) : WBond W25Q40EW 1.65-1.95V 4096Kx1S, page
Storing updated firmware image...
[=====] 100 %
Verifying update...
Update successful.

Firmware image has been updated from version 86.04.60.00.C2 to 86.04.60.00.C6.

A reboot is required for the update to take effect.

C:\>
```

## 6. Re-boot the system

## 7. Finish