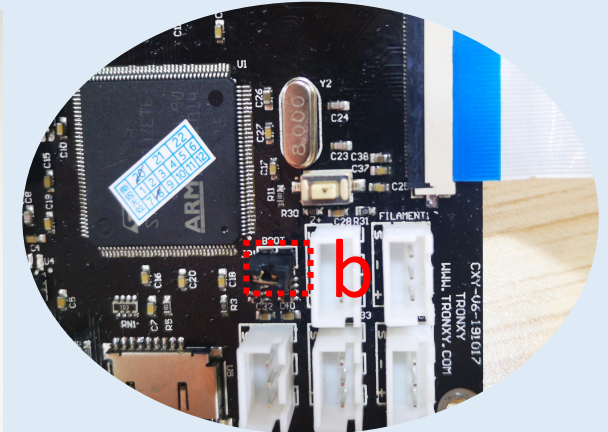
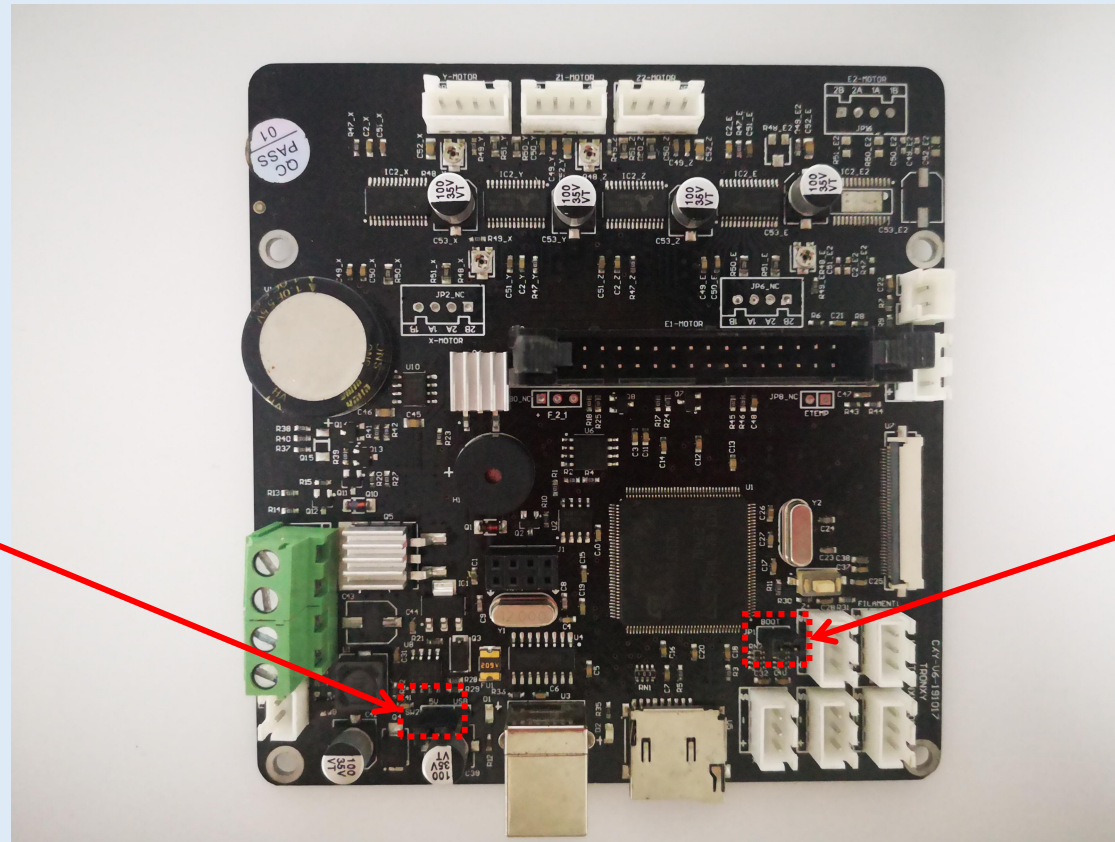
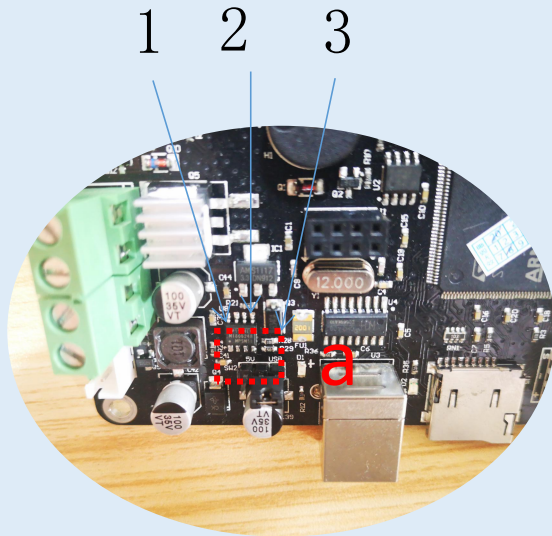






# First step

Pull out the shorting cap at position a on the motherboard, plug it from 5V to the USB, there are three pins on it, and connect the shorting cap to the 2 and 3 pins. Unplug the shorting cap of b.





## Second step

Install the USB driver on the computer, and install the driver according to your own computer system.

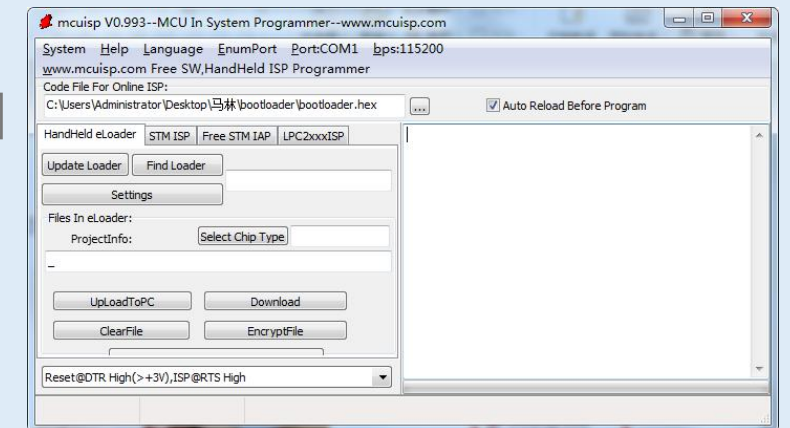
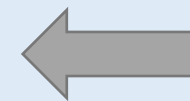
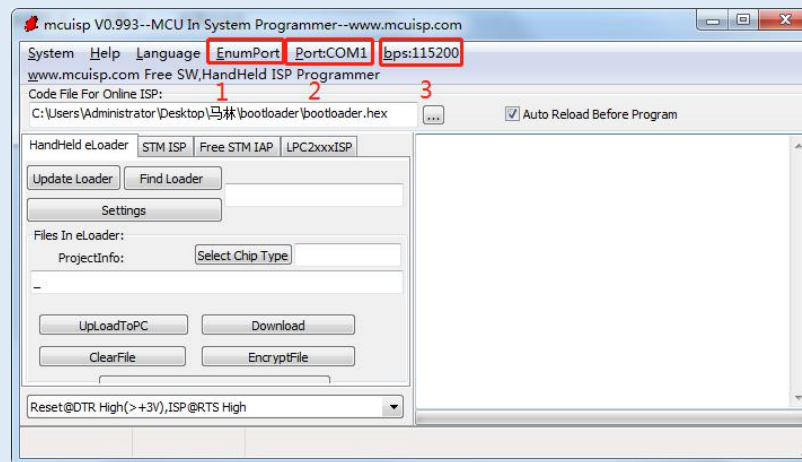
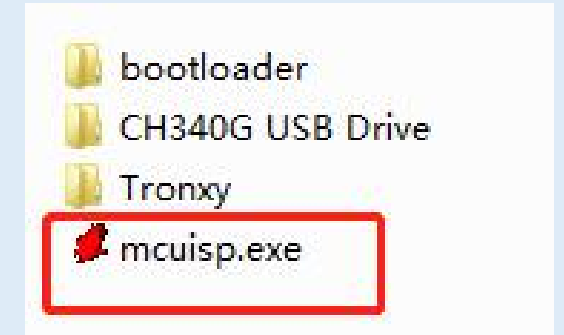
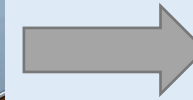
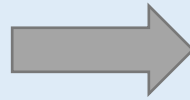
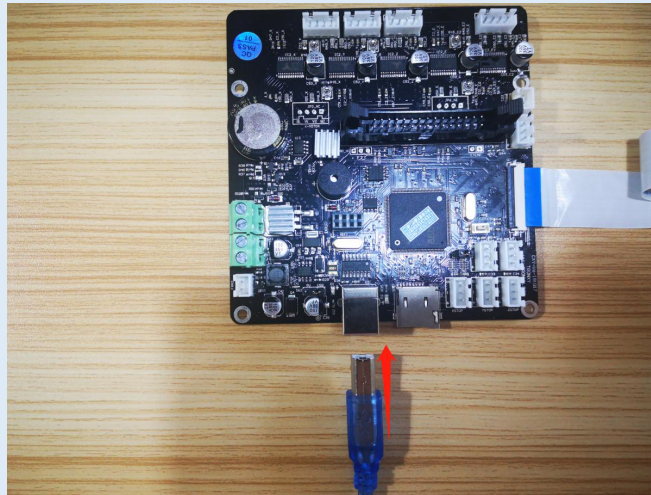
 bootloader	2021/3/10 15:08	文件夹	
 CH340G USB Drive	2021/3/10 15:08	文件夹	
 Update	2021/3/3 10:06	文件夹	
 mcuisp.exe	2015/7/18 10:58	应用程序	2,433 KB



 CH340G_windows	2016/5/5 19:54	文件夹	
 CH341SER_MAC	2013/8/9 21:27	文件夹	

## Third step

Connect the USB to the motherboard and one end to the computer USB.

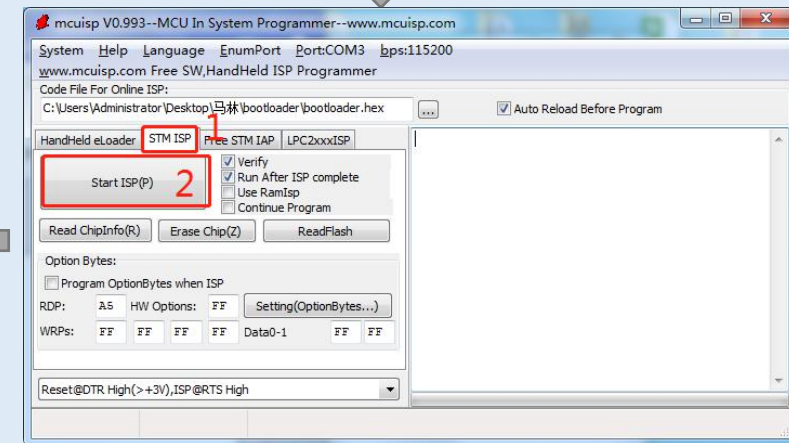
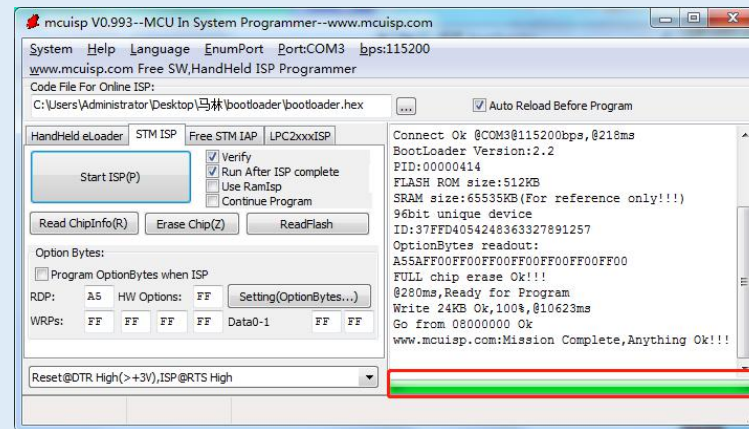
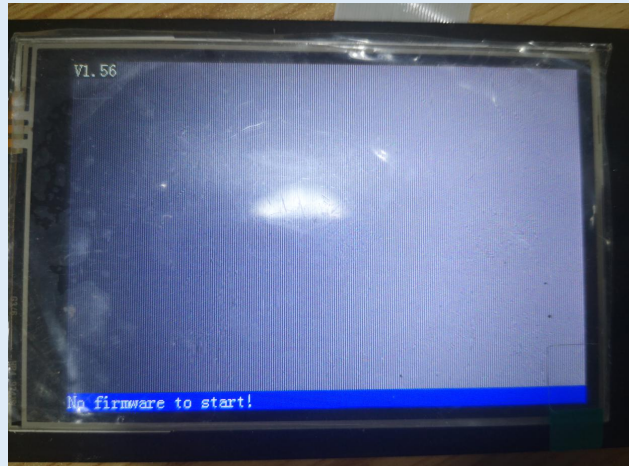
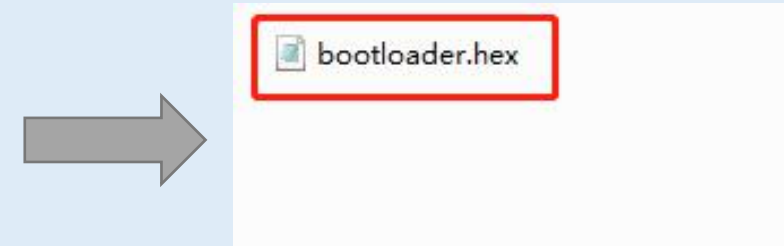
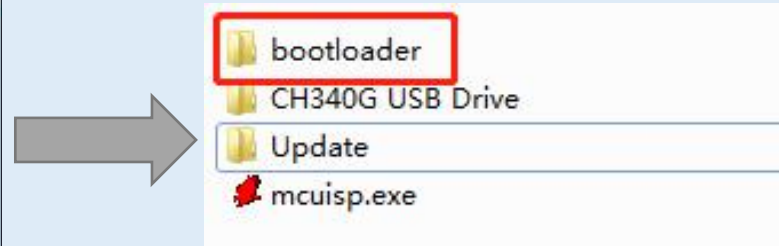
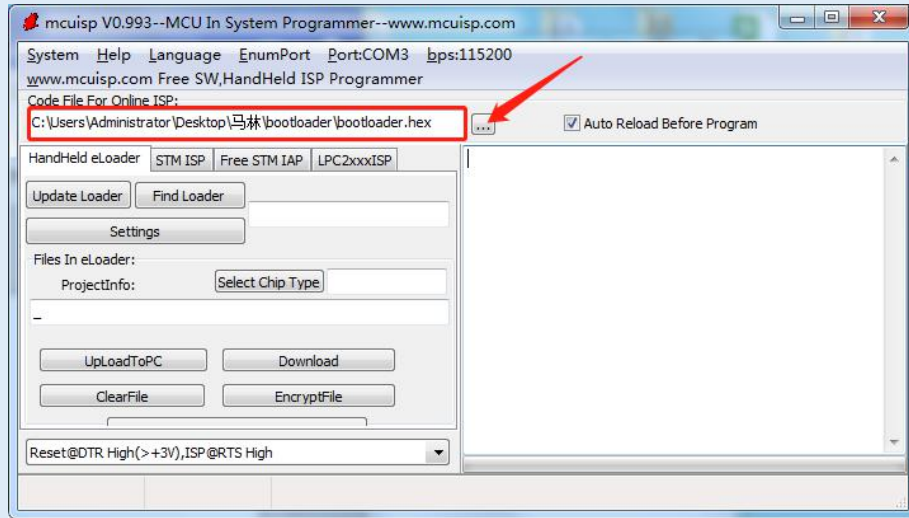


Click 1 position to search for the port, 2 position to select the communication port, 3 position to select the port's bps: 115200



## Fourth step

Select the bootloader.hex file, If the boot program is written successfully, the display will light up.

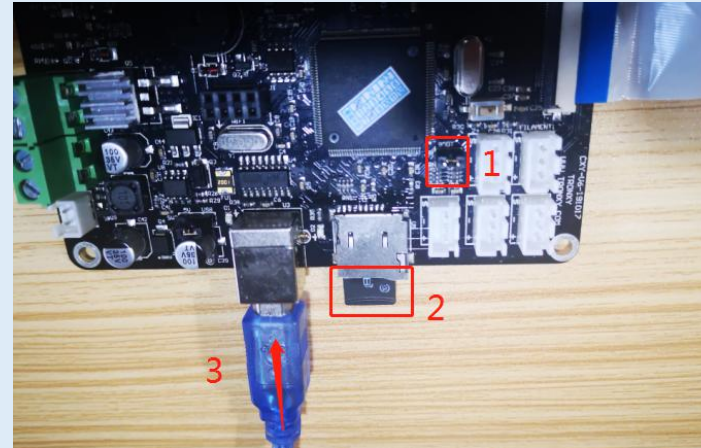
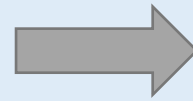


The display lights up, indicating that the boot program has been burned.

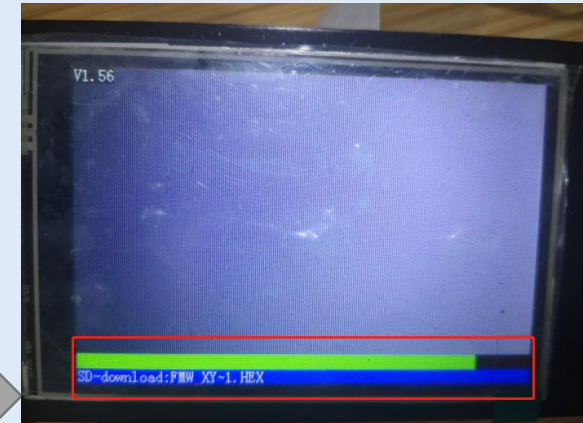
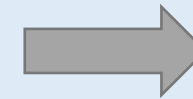
After the boot program has been burned, a green progress bar will be displayed.

# Fifth step

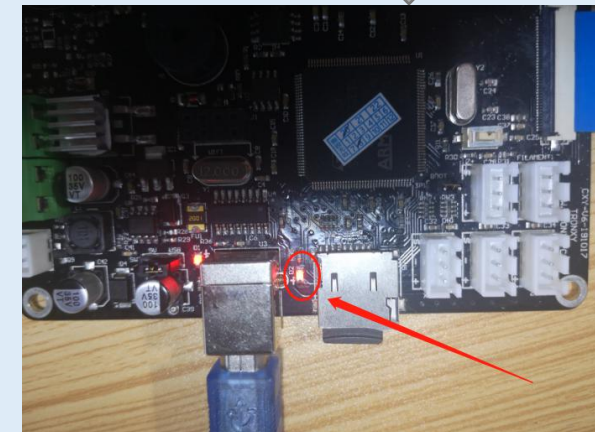
名称	修改日期	类型	大小
bootloader	2021/3/10 15:08	文件夹	
CH340G USB Drive	2021/3/10 15:08	文件夹	
Update	2021/3/3 10:06	文件夹	
mcuisp.exe	2015/7/18 10:58	应用程序	2,433 KB



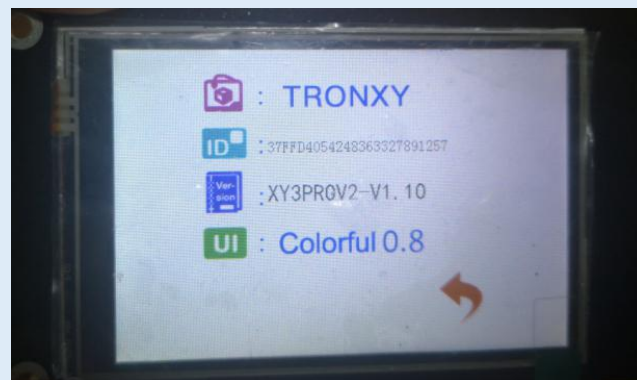
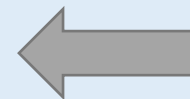
Connect the shorting cap in position 1 back, insert the SD card in position 2, and insert the USB in position 3 for power supply.



The machine is automatically burning the firmware.



The motherboard will keep flashing during the burning process.



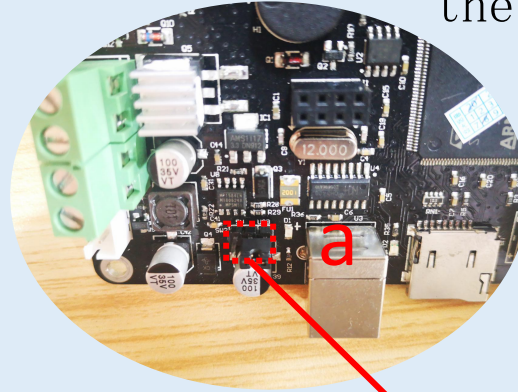
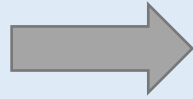
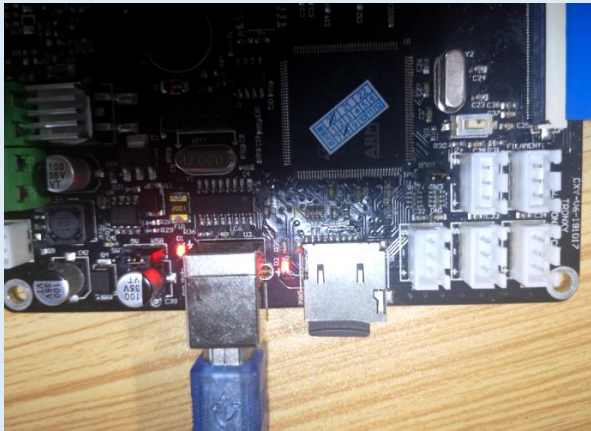
Firmware burned successfully.

Copy the Update folder to the root directory of the SD, the folder only contains the file Tronxy.



## Sixth step

Pull out the shorting cap at position a on the motherboard and plug it into 5V from the USB.



Unplug the SD card

